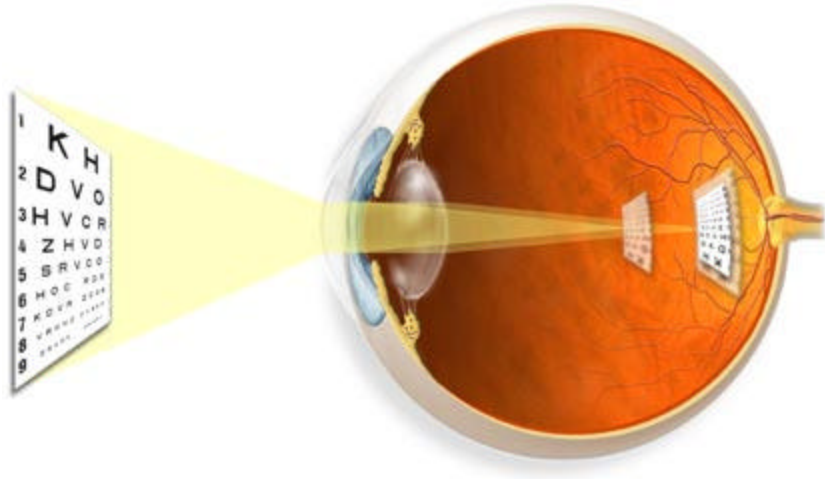


# Astigmatism

## Overview

Astigmatism means that the **cornea** is oval like a football instead of spherical like a basketball. Most astigmatic corneas have two curves – a steeper curve and a flatter curve. This causes light to focus on more than one point in the eye, resulting in blurred vision at distance or near. Astigmatism often occurs along with **nearsightedness** or **farsightedness**.



## Signs and Symptoms

- Blurred vision (near and distance)

## Detection and Diagnosis

Astigmatism can be detected and measured with **corneal topography**, **keratometry**, **vision testing** and **refraction**.

## Treatment

Astigmatism can be corrected with glasses, contacts, or surgically. The most common surgeries used to correct astigmatism are **astigmatic keratotomy** (procedures that involve placing a microscopic incision on the eye) and **LASIK**. The objective of these procedures is to reshape the cornea so it becomes more spherical or uniformly curved.